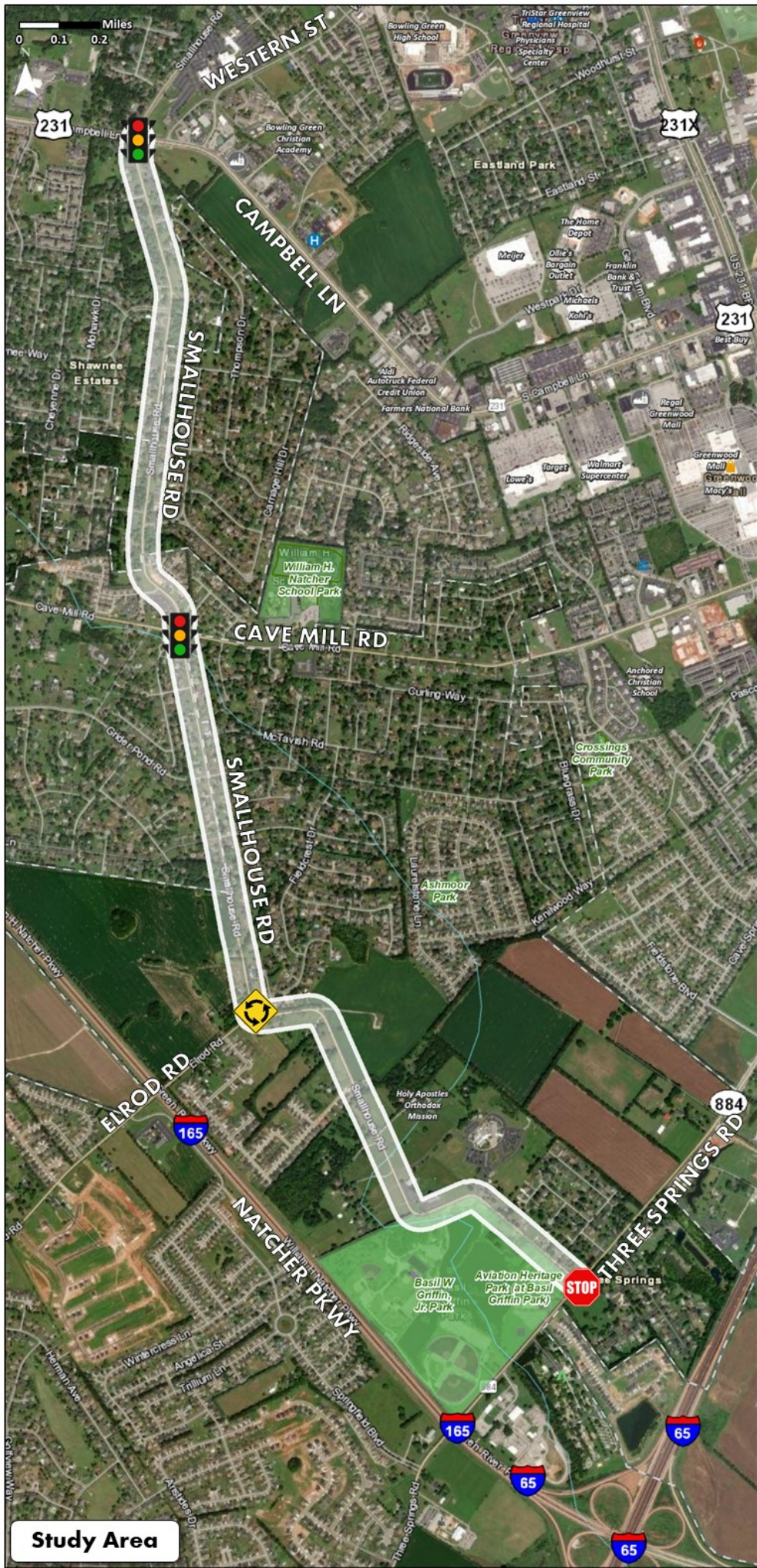


BACKGROUND



Study Area

Study Purpose

Corridor improvement study on Smallhouse Road from US 231 (Campbell Lane) to KY 884 (Three Springs Road) to evaluate safety, capacity, access management, and bicycle / pedestrian improvements along the corridor to determine future short-term and long-term solutions.

Study Goals



Provide necessary safety, capacity, access management, and bicycle / pedestrian improvements for all users into the future.



Recommendations for major intersections along the corridor including, but not limited to, Campbell Lane (US 231), Cave Mill Road, Grider Pond Road, Elrod Road, and KY 884 (Three Springs Road).



Have minimal right-of-way impacts.



Study Schedule

