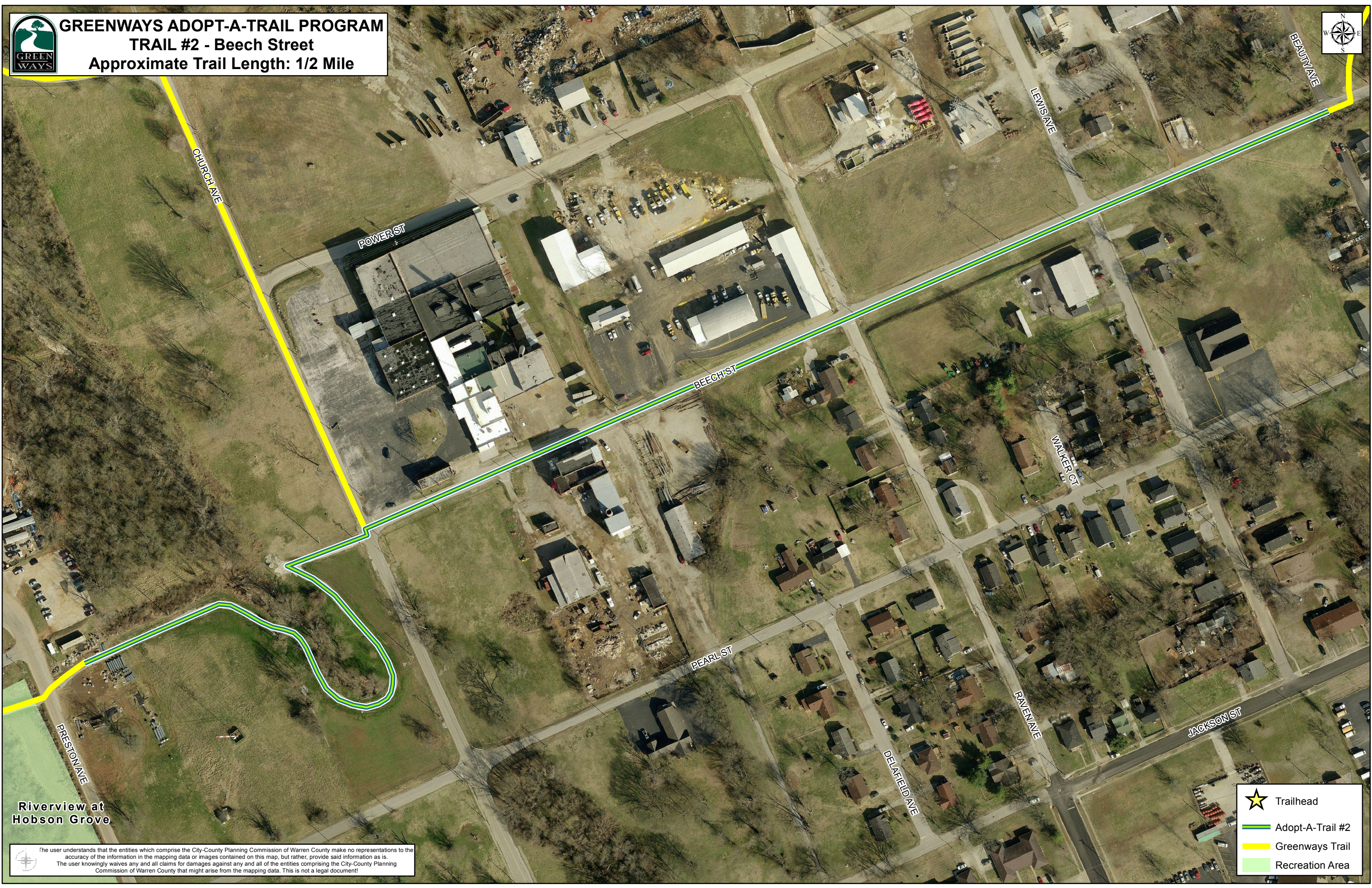




# GREENWAYS ADOPT-A-TRAIL PROGRAM

TRAIL #2 - Beech Street

Approximate Trail Length: 1/2 Mile



Riverview at  
Hobson Grove

The user understands that the entities which comprise the City-County Planning Commission of Warren County make no representations to the accuracy of the information in the mapping data or images contained on this map, but rather, provide said information as is. The user knowingly waives any and all claims for damages against any and all of the entities comprising the City-County Planning Commission of Warren County that might arise from the mapping data. This is not a legal document!

- ★ Trailhead
- Adopt-A-Trail #2
- Greenways Trail
- Recreation Area